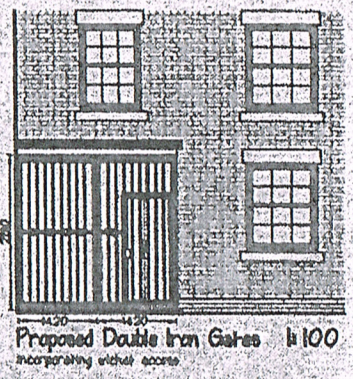


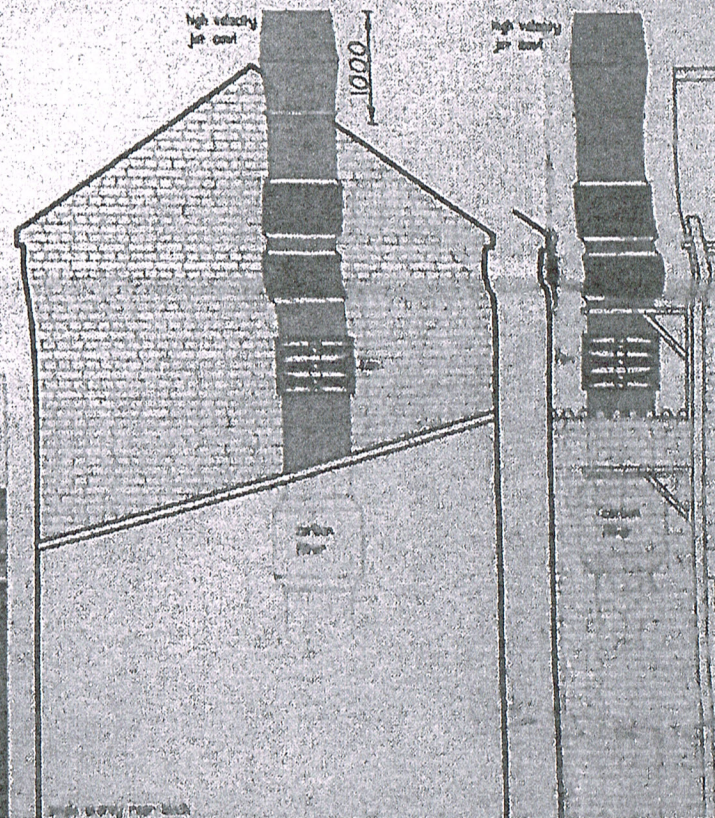
Proposed Ground Floor Plan 1:100



Proposed Double Iron Gates 1:100 incorporating vehicle access

Existing Boundary Wall to Lower Yard

All external elements of the extraction fan to be in galvanneal steel half finish.
 Ceiling mounted fully welded stainless steel canopy above entire width of cooking equipment with 250mm air gap at end and front, fitted with stainless steel fine constant baffle type graded fine mesh collection of cooking oil in recessed below canopy plenum.
 Suitable sized Vent-Axia centrifugal turbo fan 300mm diameter (high energy efficiency) fan mountings on rear external wall to give 60 no. air changes per hour in kitchen area with max L6m/sec, incorporating carbon filtration system 650x650x500mm deep consisting pre-filt units, two slencers 500mm diameter ID both fitted up stream of fan, using 600mm dia ductwork and discharges vertically through high velocity jet coat in above pitch line, kitchen has ft³/minute fresh air intake system with filter, also gas inter-lock device to comply with current regulations.
 To eliminate any noise nuisance from the extraction system, noise level of the fan at front termination will be reduced from 70, 5dBA to 50, 5dBA via two 500mm ID silencers on the fan.



Proposed Rear Elevation Proposed external extraction system & vertical fan